

Chapter

01

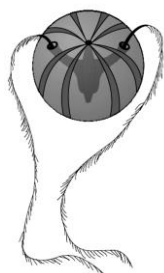
ANIMAL KINGDOM



RANKER'S STUFF



Q.1 How can you distinguish the animal shown below from coelenterates ?



- (1) Presence of Eight external rows of ciliary comb plates
- (2) Property of Bioluminescence
- (3) Absence of stinging cells
- (4) All of the above

Q.2 Which one of the following is a radially symmetrical, blind sac body plan and diploblastic animal?

- (1) Spongilla
- (2) Euspongia
- (3) Asterias
- (4) Physalia

Q.3 Consider the following statements:

- (A) Protochordates are exclusively marine
- (B) In cephalochordates, Notochord extends from head to tail region.
- (C) In urochordates, Notochord is present only in larval tail.
- (D) Cranium and vertebral column are bony in cyclostomates.

Which of the above statement is/are **correct**?

- (1) Only A
- (2) B, C and D
- (3) A, B and C
- (4) All

Q.4 Consider the following characteristic of fishes

- (A) They have four pairs of gills which are covered by an operculum.
- (B) They have air bladder which regulates buoyancy

(C) They are mostly viviparous and development is direct

(D) Their body is streamlined and covered with cycloid/ ctenoid scales

Which of the above characteristics regarding **bony fishes** are **correct**?

- (1) A, B and C
- (2) C and D
- (3) A, B and D
- (4) B only

Q.5 Identified the **correct** statement from the following with reference to **Amphibians**:

- (A) They have internal fertilisation and development is direct.
- (B) Amphibian skin is moist and without scales
- (C) Their body is divisible into head and trunk
- (D) They have three chambered heart

Select the **correct** answer:

- (1) A and D
- (2) A and B
- (3) B, C and D
- (4) D alone

Q.6 Which of the following pairs are **correctly** matched?

- (A) **Poikilotherms**- Birds and mammals
 - (B) **Agnath**- Petromyzon and Myxine
 - (C) **Tunicates** – Ascidia, Salpa and Doliolum
 - (D) **Cartilaginous fishes** - Betta and Labeo
- (1) A and B
 - (2) A, B and C
 - (3) B and C
 - (4) A, B and D

Q.7 What would happen if some fresh water protozoans are placed in distilled water?

- (1) The contractile Vacuole will work faster
- (2) The contractile vacuole will work slower
- (3) The contractile vacuole shows no change
- (4) The contractile vacuole disappears

Q.8 Match the column :-

(a)	Dentalium	(i)	Brittle star
(b)	Ophiura	(ii)	Cuttle fish
(c)	Antedon	(iii)	Sea Urchin
(d)	Echinus	(iv)	Tusk shell
(e)	Sepia	(v)	Sea lily

(1) a-(iv). b-(i), c-(iv). d-(ii), e-(iii)

(2) a-(iv), b-(i), c-(v), d-(iii). e-(ii)

(3) a-(i), b-(iv), c-(v), d-(iii). e-(ii)

(4) a-(iv), b-(i), c-(iii), d-(v). e-(ii)

Q.9 True coelom and metameric segmentation in the body is first observed in which of the following phylum :-

(1) Platyhelminthes (2) Aschelminthes

(3) Annelida (4) Arthropoda

Q.10 Read the following statements (a to e) carefully

(a) Triploblastic

(b) Bilateral symmetry

(c) Organ system organisation

(d) Pseudocoelomate

(e) Metameric segmentation

Which of the above statement(s) is/are **correct** for phylum **Aschelminthes** ?

(1) a and b only (2) a, b, c and e

(3) a, b, c and d (4) a, b, c, d and e

Q.11 Parental care by males is found in

(1) Synaptura (2) Labeo

(3) Hippocampus (4) Anabas

Q.12 Which of the following animal is radially symmetrical but has a bilaterally symmetrical larva?

(1) Ascaris (Round worm)

(2) Nereis (Ring worm)

(3) Pila (Apple snail)

(4) Asterias (Star fish)

Q.13 Mark the **incorrectly** matched pair:

(1) **Petromyzon** – Body devoid of scales and paired fins

(2) **Scoliodon** – Operculum present but air bladder is absent

(3) **Exocoetus** – Heart two chambered with sinus venosus

(4) **Rana** – Cold blooded with 10 pairs of cranial nerves and mesonephric kidneys

Q.14 Match list 'A' and list 'B' correctly and find your answer from the code given below :-

List -A (Animal)		List – B (Common name)	
(i)	Physalia	(A)	Brain coral
(ii)	Pennatula	(B)	Sea fan
(iii)	Gorgonia	(C)	Sea pen
(iv)	Meandrina	(D)	Portuguese man of war

Code:

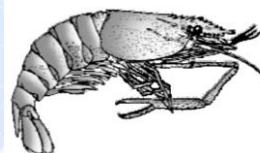
(1) (i)-A, (ii)-B, (iii)-C, (iv)-D

(2) (i)-D, (ii)-C, (iii)-B, (iv)-A

(3) (i)-C, (ii)-D, (iii)-B, (iv)-A

(4) (i)-D, (ii)-C, (iii)-A, (iv)-B

Q.15 Mark the **incorrect** statement regarding the animal given in the adjacent figure:



(1) Respiration occurs by gills

(2) Excretion occurs by green glands

(3) It is an example of living fossil

(4) Jointed legs for swimming

Q.16 Pick the odd pair out:

(1) **Cellular level:** Porifera

(2) **Tissue level:** Aschelminthes

(3) **Organ level:** Platyhelminthes

(4) **Organ system level:** Annelida

Q.17 A living fossil is

(1) Coelacanth (2) Limulus

(3) Sphenodon (4) all the above

Q.18 Which one of the following is a matching pair of an animal & a certain phenomenon it exhibits:-

(1) **Planaria** - High power of Regeneration

BIOLOGY

- (2) **Culex** - Incomplete metamorphosis
 (3) **Obelia** - Metamerism
 (4) **Pheretima** - Sexual dimorphism

Q.19 Select the pseudocoelomates from the list of organisms given below:-

- (1) Ascaris, Fasciola, Taenia
 (2) Culex, Locusta, Limulus
 (3) Wuchereria, Ascaris, Ancylostoma
 (4) Nereis, Hirudinaria, Wuchereria

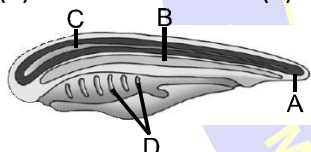
Q.20 Which one of the following pairs of animals comprise '**Cartilaginous fishes**'?

- (1) Labeo and Catla
 (2) Pterophyllum and Scoliodon
 (3) Pristis and Carcharodon
 (4) Petromyzon and Myxine

Q.21 Which of the following fishes is also known as "**Great white shark**"?

- (1) Pristis (2) Trygon
 (3) Clarias (4) Carcharodon

Q.22



A schematic representation of a chordate's embryo is shown in the above figure.

The structures marked A, B, C and D are respectively:-

- (1) Notochord, Nerve cord, Intestine and gill slits
 (2) Postanal part, Gill slits, Nerve cord and Notochord
 (3) Postanal part, nerve cord, Notochord and Gill slits
 (4) Post anal part, Notochord, Nerve cord and Gill slits.

Q.23 In which one of the following protochordates Notochord present only in the tail of larva?

- (1) Ascidia (2) Balanoglossus
 (3) Myxine (4) Branchiostoma

Q.24 In which of the following group notochord present through out the life?

- (1) Hemichordata (2) Urochordata
 (3) Cephalochordata (4) Vertebrata

Q.25 Match the **column-I** with the **column-II** and find out the **correct** answer:

Column - I		Column - II	
(A)	Spongocoel	(i)	Arthropoda
(B)	Dorso-ventrally flattened body	(ii)	Cnidaria
(C)	Coelenteron cavity	(iii)	Porifera
(D)	Chitinous exoskeleton	(iv)	Platyhelminthes

- (1) A-iii, B-iv, C-i, D-ii (2) A-iv, B-iii, C-ii, D-i
 (3) A-iii, B-iv, C-ii, D-i (4) A-ii, B-iv, C-iii, D-i

Q.26 Which of the following is a matching pair?

- (1) Ophiura - Sea lily
 (2) Octopus - Cuttle fish
 (3) Torpedo - Electric ray
 (4) Aptenodytes - Ostrich

Q.27 Which one is **not** the character of **Osteichthyes**?

- (1) Terminal mouth
 (2) Gills with operculum
 (3) Body covered by placoid scales
 (4) Air bladder regulate buoyancy.

Q.28 Which one of the following pairs is **not correctly** matched?

- (1) Chaetopleura - Chiton
 (2) Ascaris - Round worm
 (3) Wuchereria - Filaria worm
 (4) Enterobius - Hook worm

Q.29 The greatest evolutionary change that enabled the land vertebrates to be completely free from water, was the development of :-

- (1) Four appendages
 (2) Lungs
 (3) Cleidoic eggs
 (4) Four chambered heart

Q.30 Identify the following figure **correctly** with its characters & phylum :

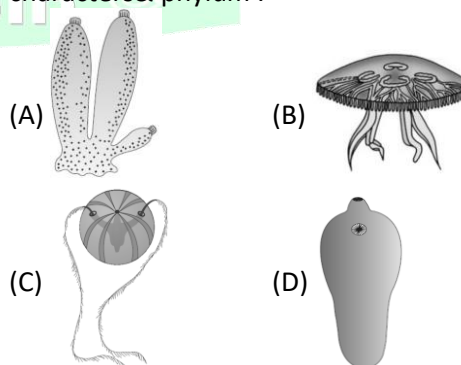


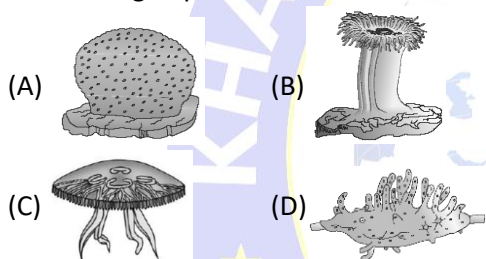
	Fig.	Animal	Characters	Phylum
(1)	A	<i>Sycon</i>	Sensory cells	Porifera
(2)	B	<i>Aurelia</i>	Cnidocytes	Ctenophora
(3)	C	<i>Pleurobrachia</i>	Bioluminescence	Ctenophora
(4)	D	<i>Hirudinaria</i>	Acoelomate	Platyhelminthes

Q.31 How many in the given examples of animals are **Coelenterates** ?

Physalia, Obelia, Planaria, Pennatula, Gorgonia, Pleurobrachia, Meandrina and Nereis.

(1) Three (2) Four (3) Five (4) Six

Q.32 Identify the following four animals (A, B, C and D) given below. Which one of these is **not correctly** identified in the option given along with its correct taxonomic group and their common name ?



Options :

	Figure	Name of animal	Taxonomic group	Common Name
(1)	B	Adamsia	Ctenophora	Star coral
(2)	D	Spongilla	Porifera	Fresh water sponge
(3)	C	Aurelia	Coelenterata	Jelly fish
(4)	A	Euspongia	Porifera	Bath sponge

Q.33 How many organism are related with Echinodermata phylum ?

Star fish, Sea-urchin, Sea-lily, Sea-mouse, Sea-hare, Sea-cucumber, Brittle star, Sea-potato, Sea-squirt, Sea-fan, Sea-pen

(1) 4 (2) 5 (3) 6 (4) 7

Q.34 Sinus, venosus is characteristic of

(1) reptiles and birds (2) Fishes, amphibians
(3) birds only (4) birds and mammals

Q.35 Which one of the following features is common in silverfish, scorpion, dragonfly and prawn ?

(1) Three pairs of legs and segmented body
(2) Chitinous cuticle and two pairs of antennae
(3) Jointed appendages and chitinous exoskeleton
(4) Cephalothorax involves

Q.36 In which animal nerve cell is present but brain is absent ?

(1) Sponge (2) Earthworm
(3) Cockroach (4) Hydra

Q.37 The evidence for the origin of birds from reptiles is the presence in them of :

(1) Feathers (2) Scales
(3) Claws (4) Hairs

Q.38 In which one of the following groups all animals are **hermaphrodite**?

(1) Pleurobrachia, Ascaris, Pheretima
(2) Pleurobrachia, Homo sapiens, Leech
(3) Tapeworm, Toad, Starfish
(4) Pleurobrachia, Leech, Tapeworm

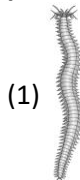
Q.39 Which of the following parasites have no alimentary canal and absorb nutrients from host directly through their body surface?

(1) Fasciola (Liver fluke)
(2) Ancylostoma (Hook worm)
(3) Ascaris (Round worm)
(4) Taenia (Tape worm)

Q.40 Mark the **incorrect** statement regarding following animals and their characteristics:

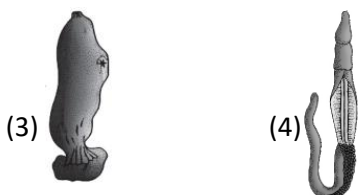
(1) **Nereis** → Dioecious and parapodia for swimming
(2) **Limulus** → Living fossil and respiration by book gills
(3) **Echinus** → Endoskeleton of calcareous ossicles and water vascular system
(4) **Balanoglossus** → Internal fertilisation and direct development

Q.41 Which of the following animal has **lateral** or **paired** pharyngeal gill slits for respiration?



(1)

(2)



Q.42 Mark the option with **wrong** taxonomic group :-

- (1) **Osteichthyes** - Exocoetus, Pristis, Gambusia
- (2) **Urochordata** - Salpa, Pyrosoma, Doliolum
- (3) **Mollusca** - Dentalium, Chaetopleura, Pinctada
- (4) **Aschelminthes** - Ascaris, Enterobius, Wuchereria

Q.43 Mark the option with **incorrect** statement regarding the animal shown in adjacent figure:



- (1) Fully ossified endoskeleton
- (2) Feathers present all over the body
- (3) Air sacs connected to lungs supplement respiration
- (4) Pygostyle for wagging movement of tail

Q.44 Excretory organ of Balanoglossus is?

- (1) Neural gland
- (2) Proboscis gland
- (3) Nephridia
- (4) Keber's organ

Q.45 Water vascular system of echinoderm's helps in?

- (1) Locomotion
- (2) Capture and transport of food
- (3) Respiration
- (4) All of these

Q.46 Choose **incorrect** statement regarding cyclostomata?

- (1) Members are ectoparasite on some fishes
- (2) Circular mouth with jaws present
- (3) Body is devoid of scales
- (4) Vertebral column is cartilaginous

Q.47 Match the following and choose correct option:

(i)	Pteropus	a -	Angel fish
(ii)	Aptenodytes	b -	Krait
(iii)	Bungarus	c -	Flying fox
(iv)	Pterophyllum	d -	Penguin
		e -	Fighting fish

- (1) (i)- b, (ii) - c, (iii) - d, (iv) - a
- (2) (i)- a, (ii) - b, (iii) - c, (iv) - d
- (3) (i)- c, (ii) - d, (iii) - b, (iv) - a
- (4) (i)- c, (ii) - b, (iii) - d, (iv) - a

Q.48 Which of the following pairs are **correctly** matched ?

	Animals	Morphological features
(A)	Crocodile	4-chambered heart
(B)	Sea Urchin	Parapodia
(C)	Obelia	Metagenesis
(D)	Lemur	Thecodont teeth

- (1) Only A and B
- (2) A, C and D
- (3) B, C and D
- (4) Only A and D

Q.49 Which one of the following groups of the three animals each is **correctly** matched with their one characteristic morphological feature.

	Animals	Morphological features
(1)	Liver fluke, Sea anemone, cucumber	Bilateral symmetry
(2)	Centipede, Prawn, Sea hare	Jointed appendages
(3)	Scorpion, Spider, Cockroach	Ventral solid central nervous system
(4)	Cockroach, Locust, Taenia	Metameric segmentation

Direction: (Q.50 to Q.57)

- (A) If both A and R are true and R is correct explanation of A.
- (B) If both A and R true but R is not the correct explanation of A
- (C) If A is true but R is false
- (D) If both A and R are false.

Q.50 Assertion : Arthropoda is the largest phylum and members can live in all kind of habitats successfully.

Reason : They have chitinous plates for protection & jointed appendages for different functions

- (1) A
- (2) B
- (3) C
- (4) D

Q.51 Assertion : Radial symmetry in animals is advantageous in detecting food and danger

Reason : It allows the animal to be able to respond to stimulus from any direction

- (1) A
- (2) B
- (3) C
- (4) D

Q.52 Assertion : Duck-bill platypus is a false mammal because it lays eggs

Reason : True mammals are all viviparous hence duck-bill platypus are false mammals

- (1) A
- (2) B
- (3) C
- (4) D

Q.53 Assertion : Tapeworm, roundworm and pin worm are endoparasites of human intestine.

Reason : Improperly cooked food is the source of intestinal infections.

(1) A (2) B (3) C (4) D

Q.54 Assertion : Coelenterates have tissue level of organization

Reason : In Coelenterates, the cells performing the same function are arranged into group.

(1) A (2) B (3) C (4) D

Q.55 Assertion : Hooks and suckers are present in the parasitic form of flat worms.

Reason : It helps in absorbing nutrients from the host body.

(1) A (2) B (3) C (4) D

Q.56 Assertion : Endoskeleton of sturthio is fully ossified.

Reason : It is flightless birds.

(1) A (2) B (3) C (4) D

Q.57 Assertion : Radula is a file like organ for feeding in molluscs.

Reason : Radula helps in grinding of food & moves like Jaws of Cockroach.

(1) A (2) B (3) C (4) D

ANSWER KEY

RANKER'S STUFF

Que.	1	2	3	4	5	6	7	8	9	10	11	12	13	14	15
Ans.	4	4	3	3	3	3	1	2	3	3	3	4	2	2	3
Que.	16	17	18	19	20	21	22	23	24	25	26	27	28	29	30
Ans.	2	4	1	3	3	4	4	1	3	3	3	3	4	3	3
Que.	31	32	33	34	35	36	37	38	39	40	41	42	43	44	45
Ans.	3	1	2	2	3	4	2	4	4	4	3	1	4	2	4
Que.	46	47	48	49	50	51	52	53	54	55	56	57			
Ans.	2	3	2	3	1	1	4	1	1	3	2	3			

