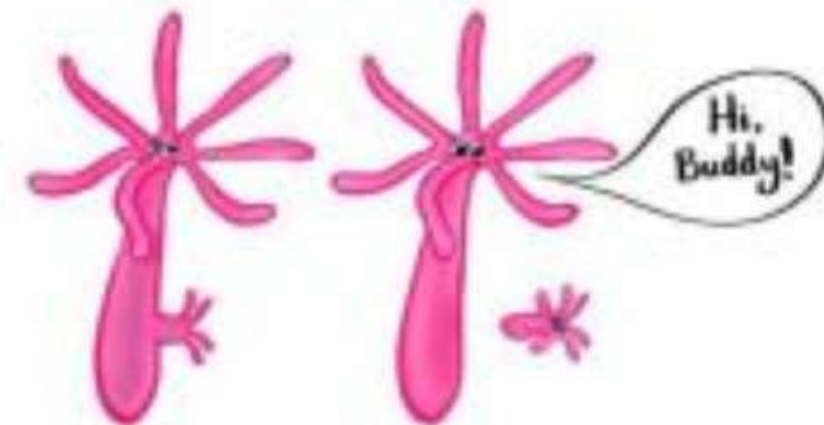
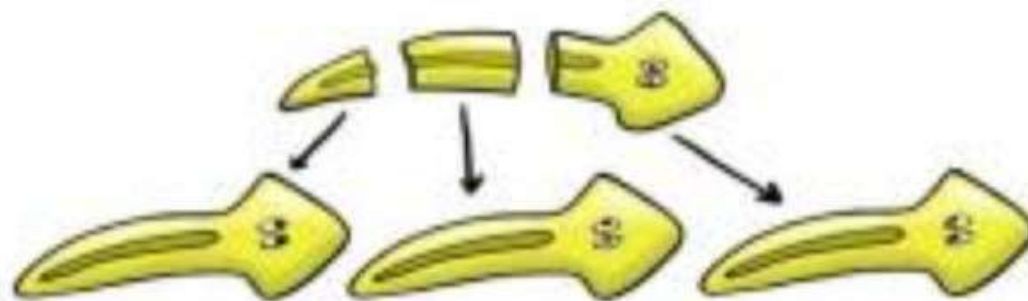
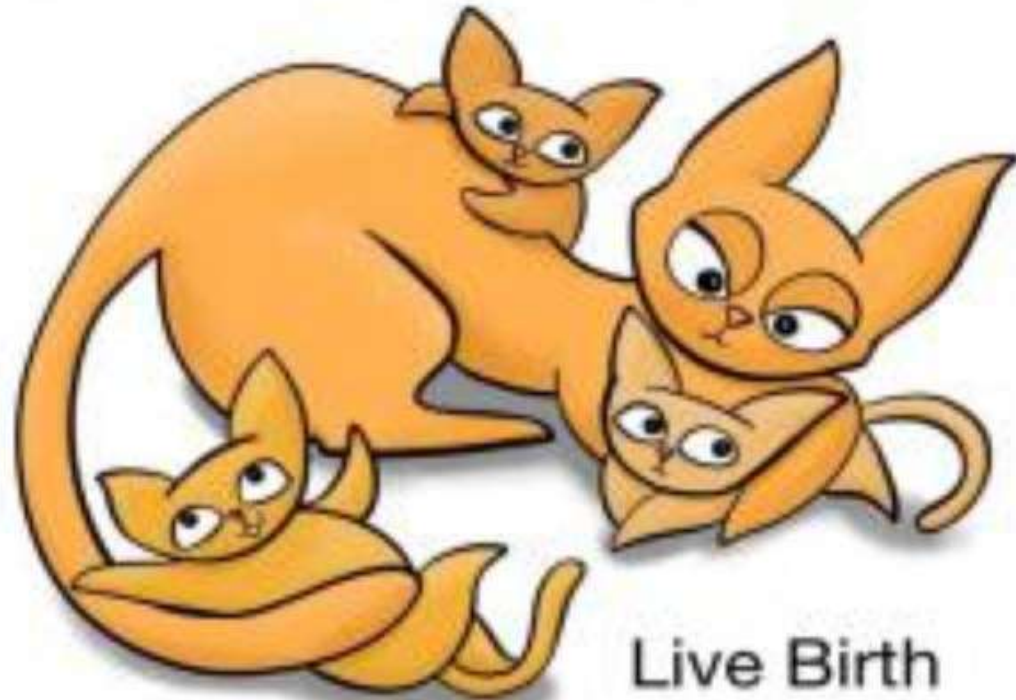




## Reproduction in Animals





# Animal reproduction

Lay eggs



Octopus



Goose



Fish



Chicken

Give birth



Cat



Rabbit



Deer



Panda

## Reproduction and its Modes

- **Animal reproduction like plant reproduction has two modes .**
- **Sexual reproduction**
- **Asexual reproduction**



## Sexual Reproduction



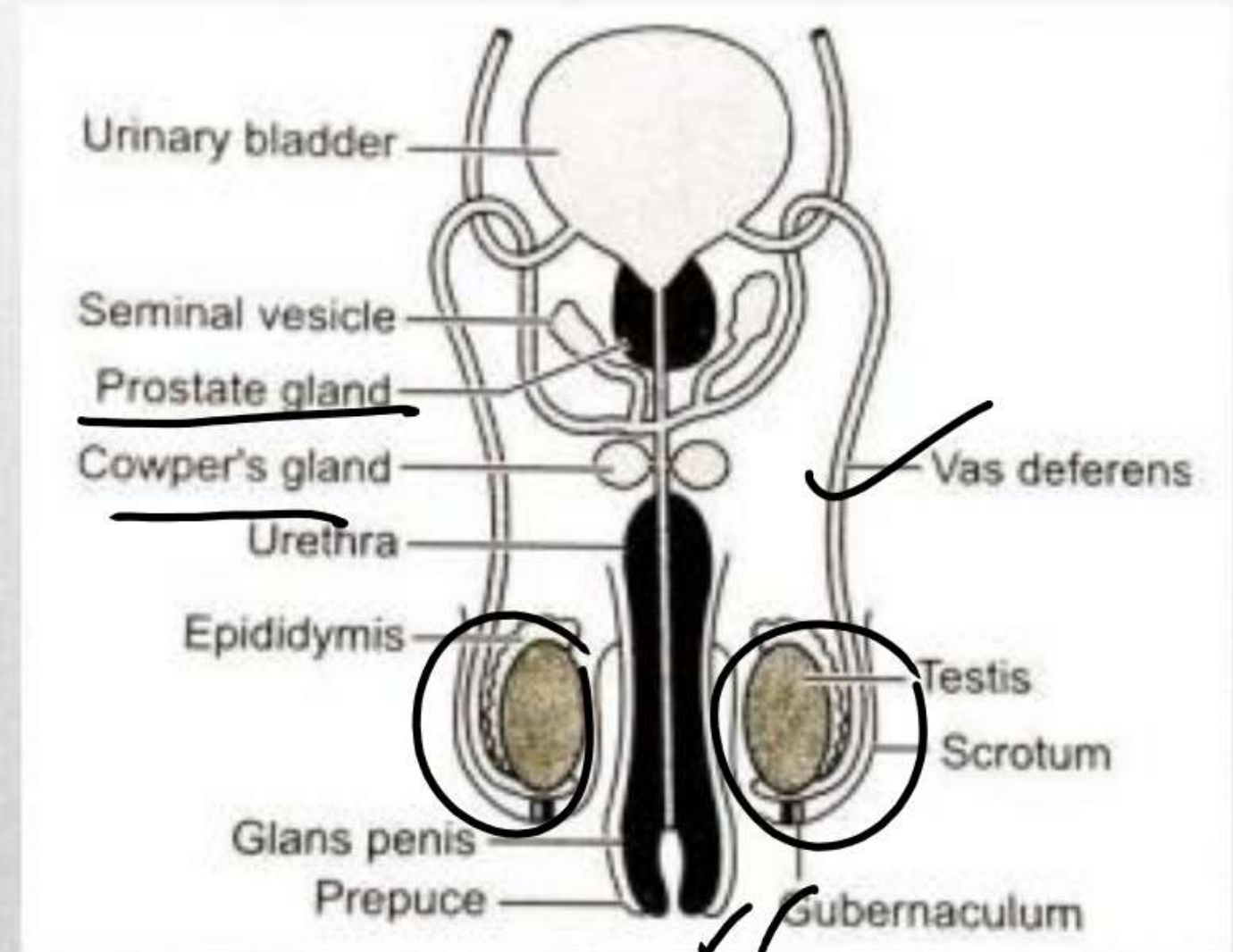
# Sexual Reproduction

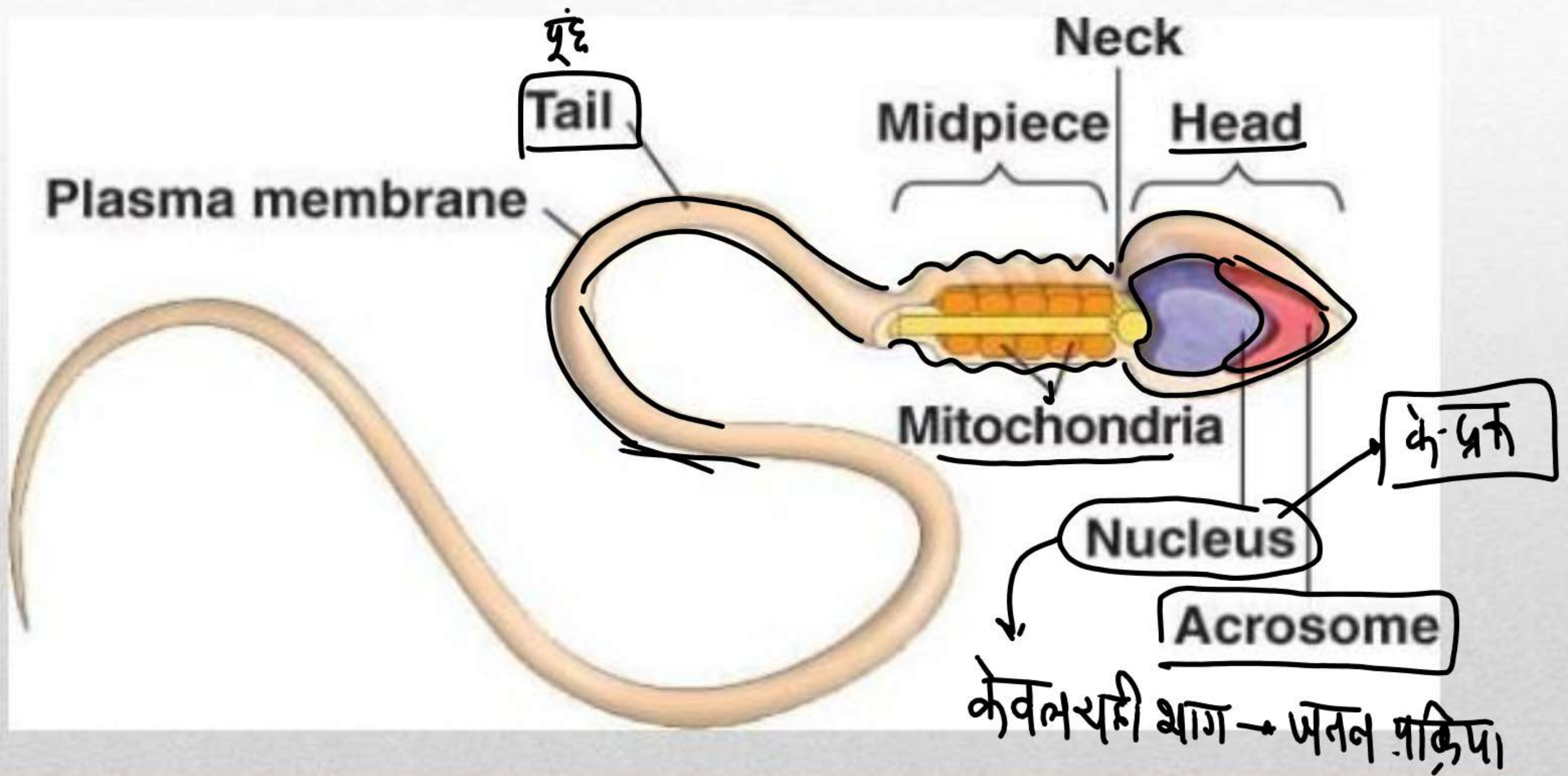
- **Animal reproductive parts, like plant reproductive parts, produce gametes that fuse to form a zygote .**
  - **The zygote is responsible for the development of the new individual .**
  - **Sexual reproduction refers to reproduction that being with the fusion of male and female gametes**
-



## Male reproductive organ

**Pair of testes, two sperm ducts, and a penis are the male reproductive organs.**







## Female Reproductive Organ

निषेचन (Fertilization)

Produce eggs and  
female hormones

Ovaries

Fallopian  
tubes

Where sperm  
meets egg

Vagina

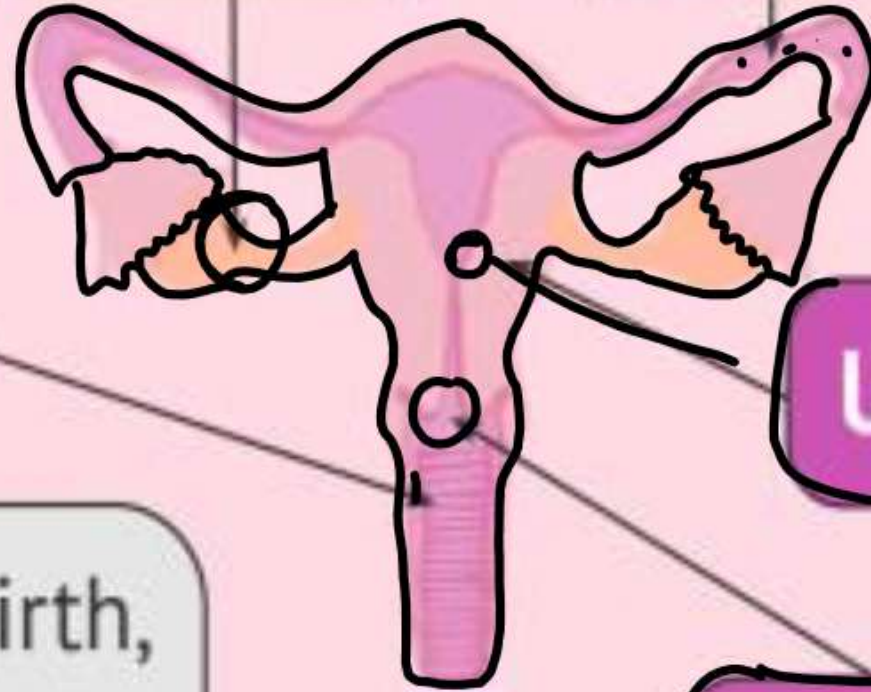
Allows for childbirth,  
intercourse and  
menstrual flow

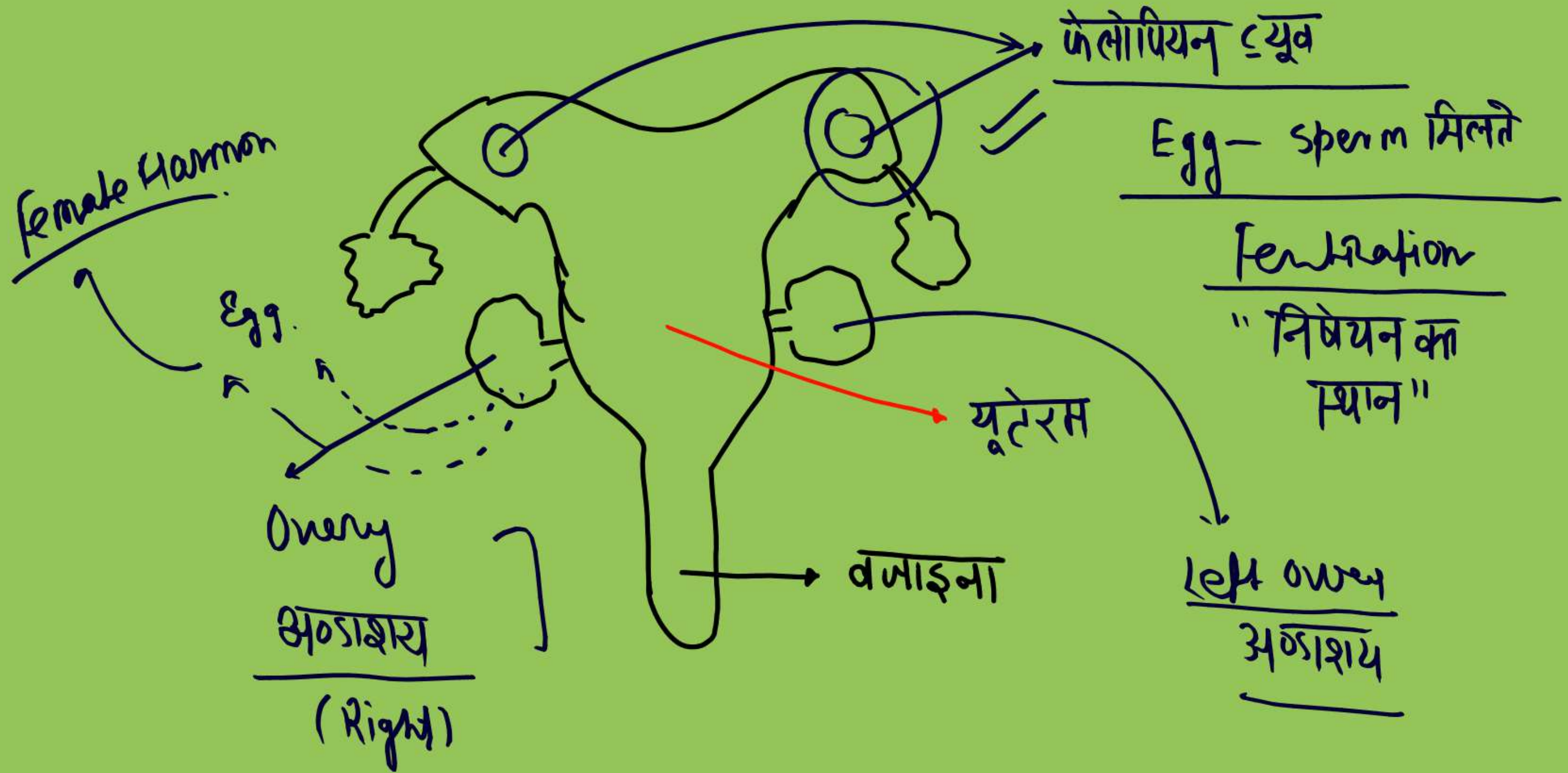
Uterus

Baby grows here

Cervix

Dilates in labor







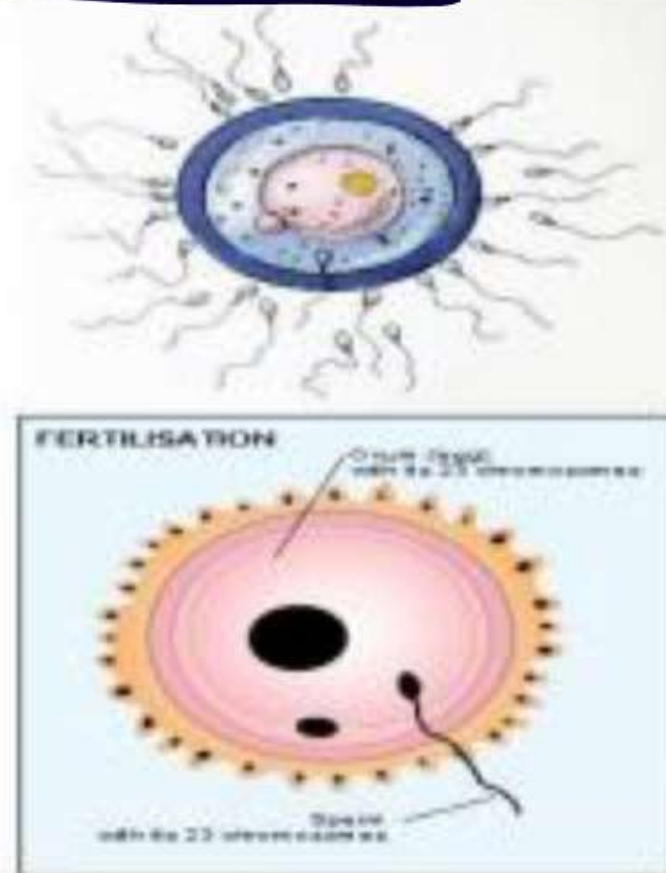
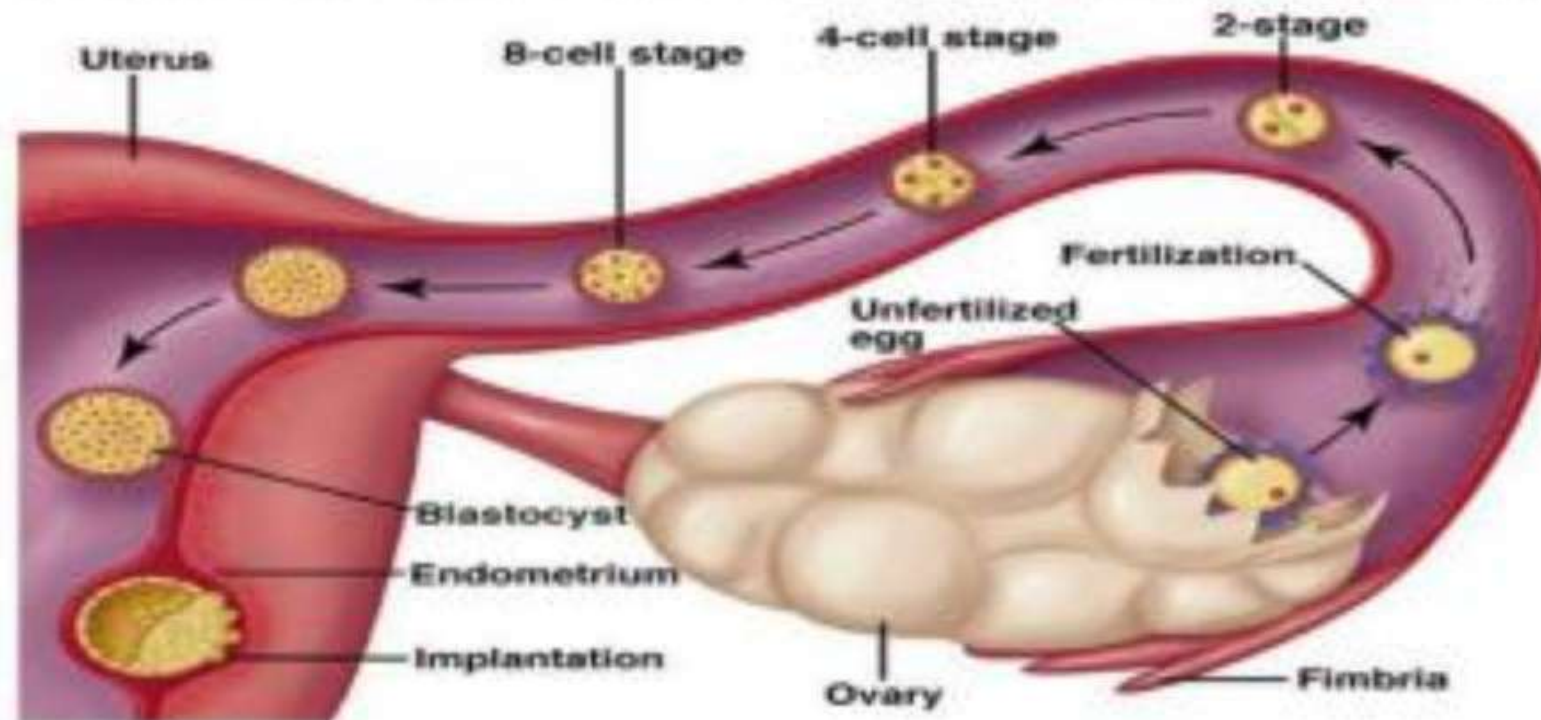
## Fertilization

### c) Fertilisation in human beings :-

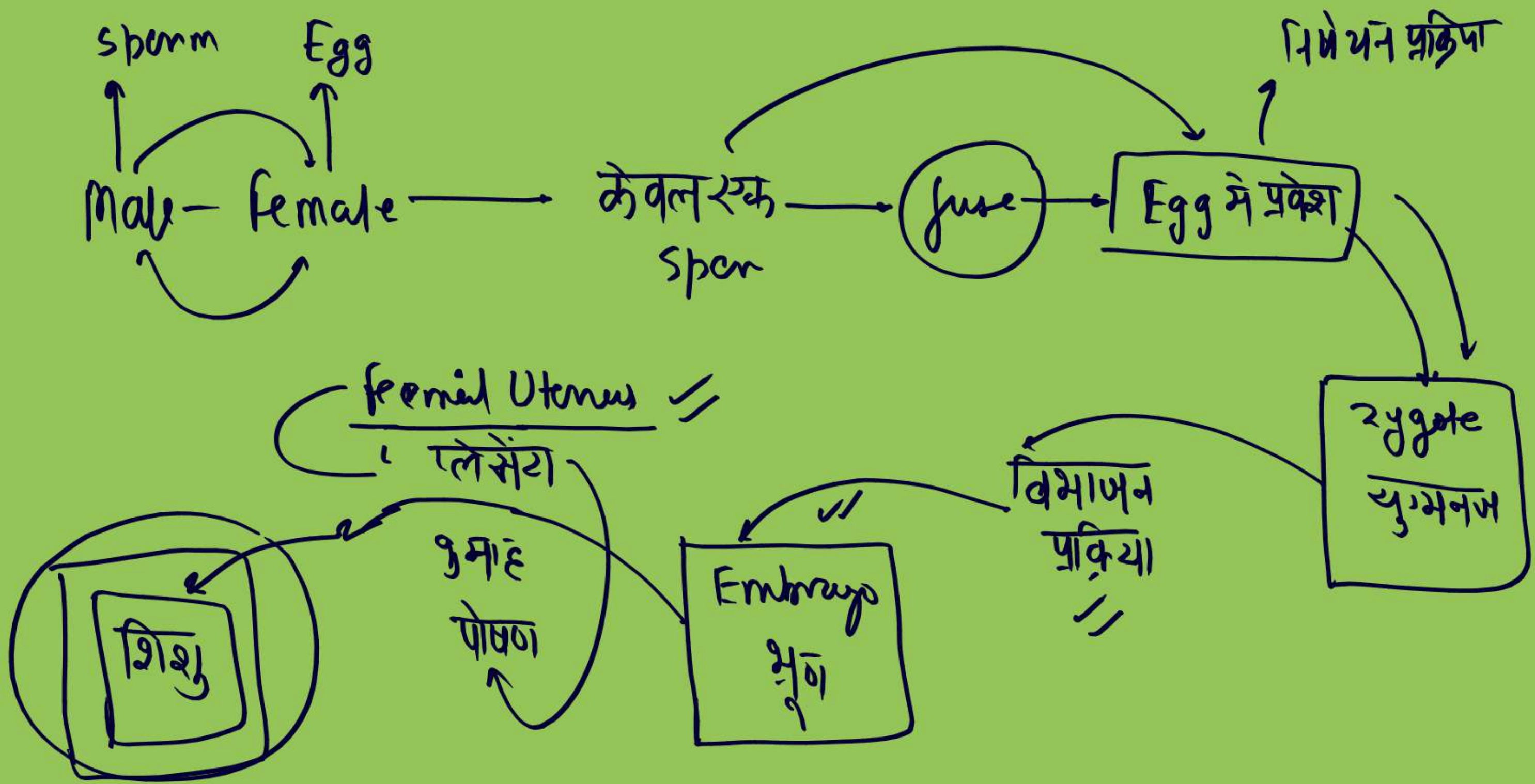
During sexual intercourse the sperms from the male enters into the vagina of the female. The sperms reaches the oviduct. One sperm fuses with an egg and forms a zygote. The zygote then gets implanted in the uterus. The zygote then starts dividing to form an embryo. The embryo gets nutrition from the mother's blood through the placenta. The development of the child takes nine months and then the child is born.

Bye/Thanking/Gallant: Dimensions Of Human Sexuality

## Stages of Development-Early Embryo









Test Tube Baby

In-Vitro-  
Fertilization

IVF





अब मादा → फेलोपियन ट्यूब → जराबी (सूजन) आ जाती है तो ऐसी

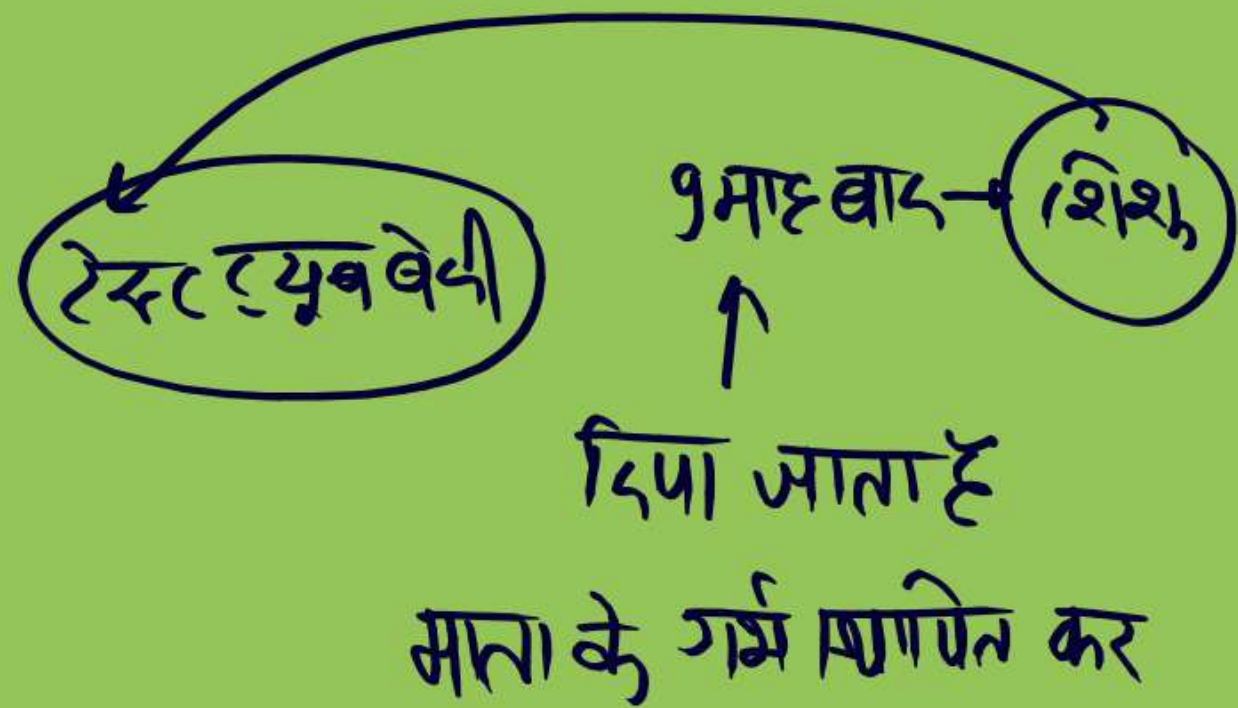
स्थिति अथवा, मोटापा या अधिक ~~अ~~ उम्र होने पा

अथवा हार्मोन अनियमितता होने पर ✓

फेलोपियन ट्यूब में प्राकृतिक रूप में निषेचन नहीं  
हो पाता है।

ऐसी स्थिति में प्रयोगशाला / (ज) कृत्रिम निषेचन करवाना

पड़ता है तथा इन्सुलिन जन्म होता है, इस प्रकार अब ट्यूब ✓





## बाह्य प्रजनन (External fertilization)

