

# Cell and Cytology

Class-9, Chap-5

Class-11- Chap-5



- Information about the cell

- Cell Theory

- Cell Structure

- Cell Organelle

- Cell Types

- Cell Division

↳ कोशिका के बारे में  
सामान्य जानकारी

कोशिका सिद्धान्त

संरचना]

कोशिकांग]

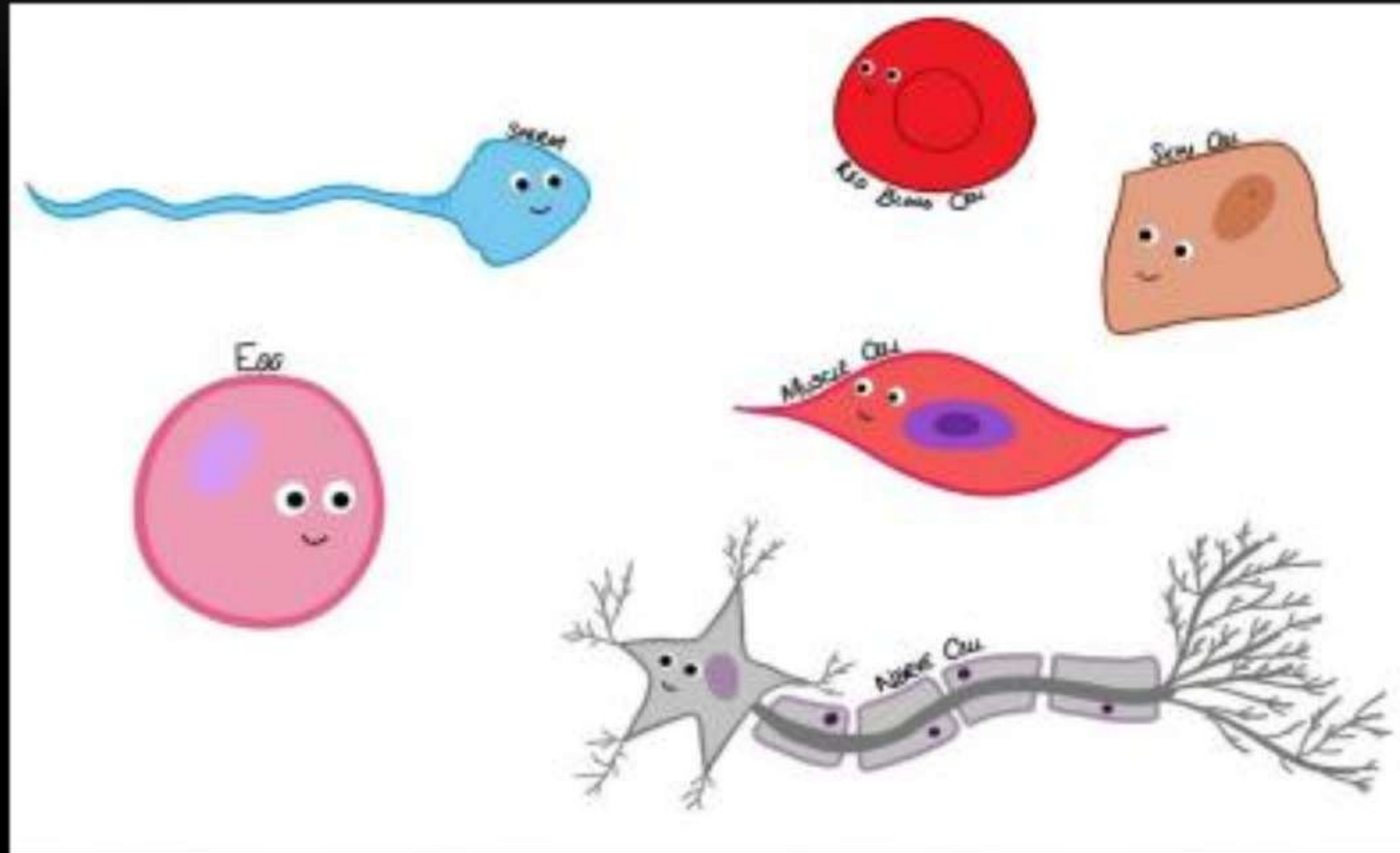
कोशिका प्रकार]

विभाजन कोशिका]



## Information about the Cell

Smallest  
Unit  
સૂક્ષ્મતમ  
इकाई



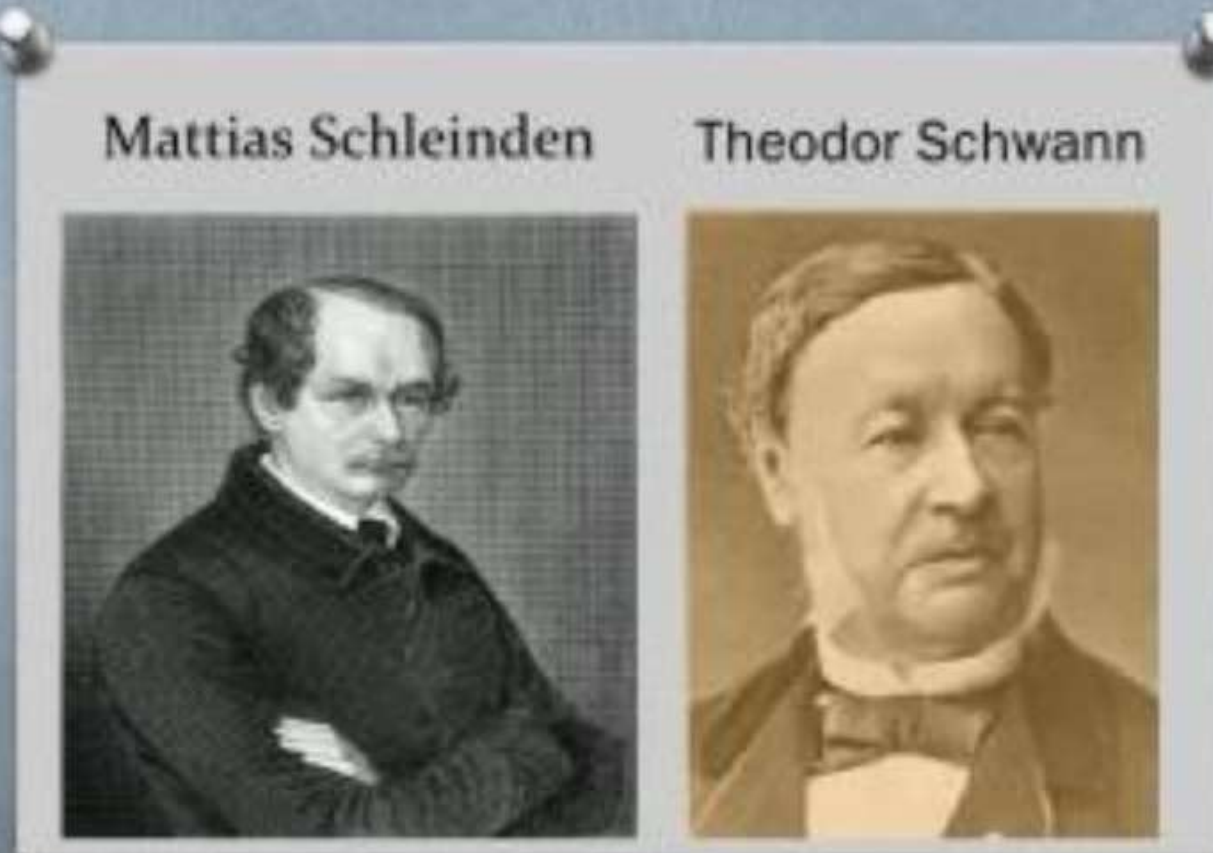
हमारा शरीर  
बनाता

अलग-अलग  
प्रकार

अलग-2  
माइक्र

# Cell Theory "कोशिका सिद्धांत".

Imp. Point of  
Cell Theory



Mattias  
Schleinden

Theodor Schwann

मैथिपह श्लाइडेन

थियोडो (श्वान)



✓ ■ The smallest unit of our body is the cell, and it is also called the functional and structural unit. ✓

✓ ■ On the basis of number of cells, living beings are of two types:  
single-celled living beings and multi-celled living beings. ✓

एकल कोशिका वाले

बहुल कोशिका ✓

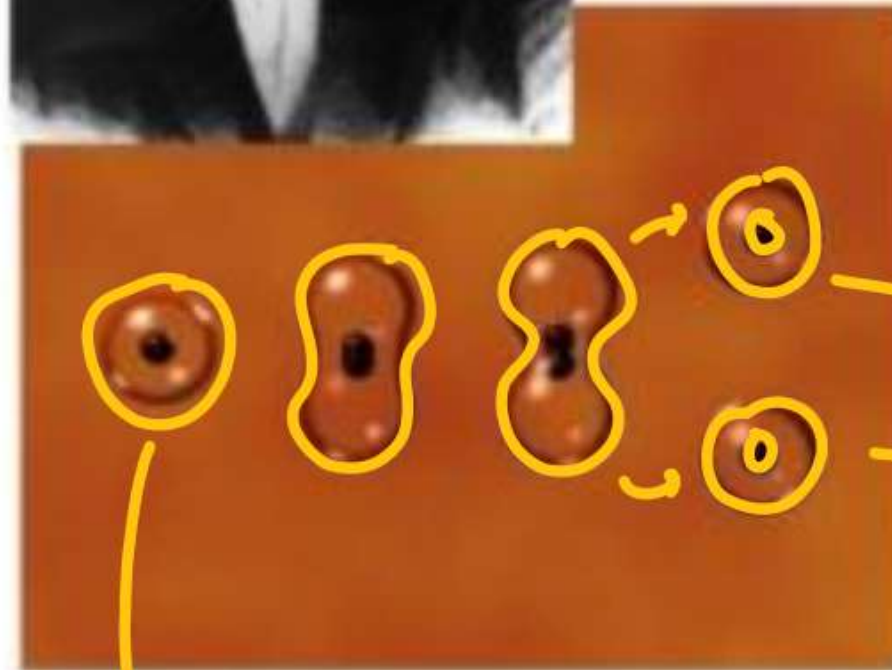
✓ ■ Our life continues as a result of chemical reactions taking place in cells, that is, as long as chemical reactions are taking place, only a living being remains alive. ○

जीवन चक्र चलता है। ○



## History of Cell Theory

In **1855** the German scientist **Rudolph Virchow** stated that every cell originates from another existing cell. Virchow demonstrated the first evidence of cell division.



Virchow

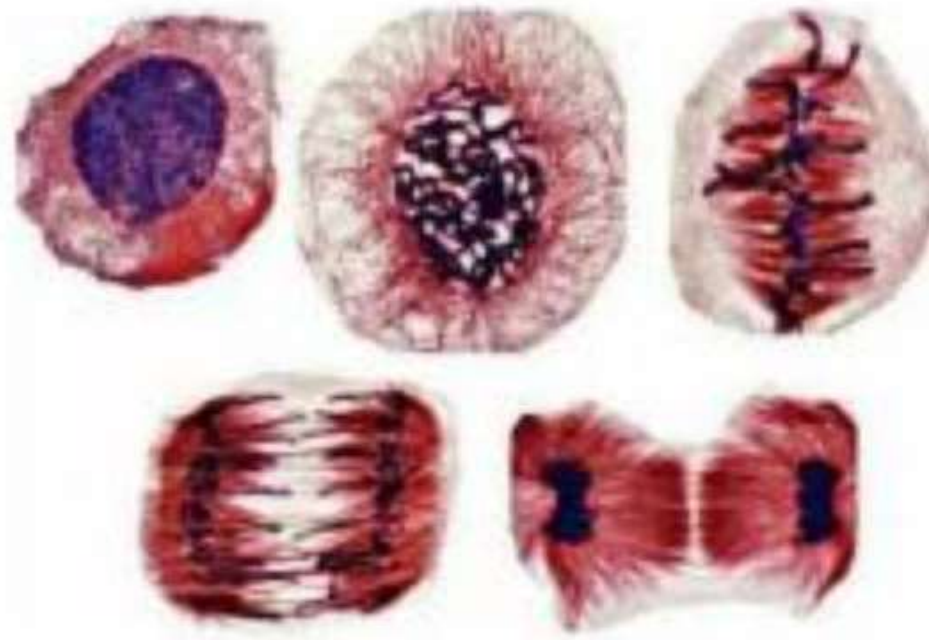
Completed  
Cell Theory

Daughter  
Cell

Mother  
cell

प्रत्येक नयी  
कोशिका का  
जन्म  
अपनी  
पूर्ववर्ती  
कोशिका के  
विभाजन से  
होता है।

## Cell Division



**Each new cell arises from the division of its predecessor cells.**

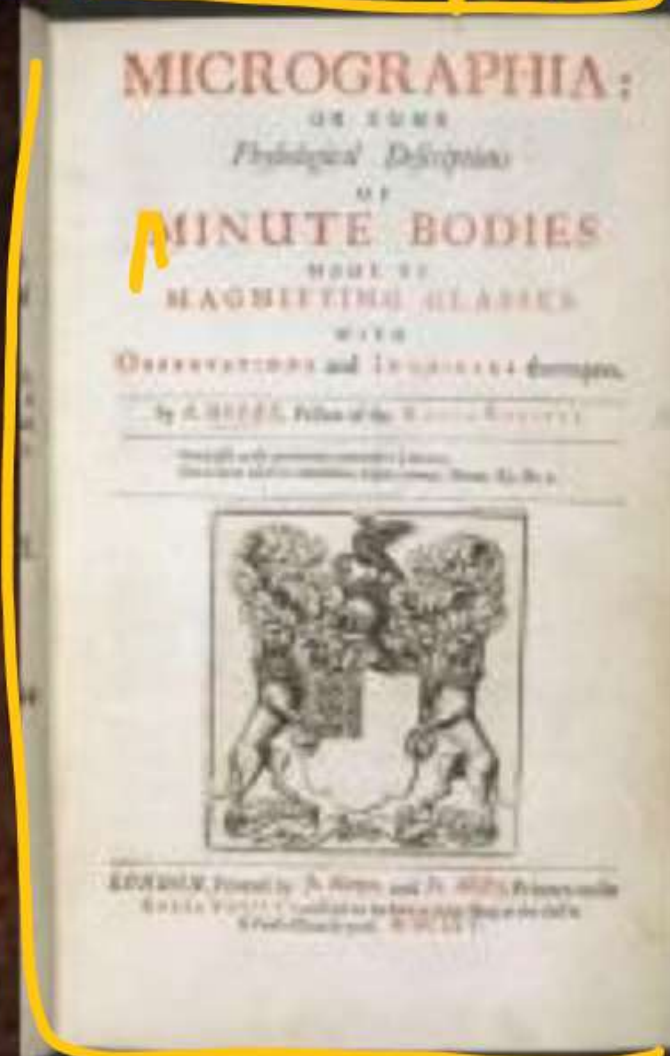


# Cell Discovery कोशिका की खोज

राबर्ट हुक

1665

MICROGRAPHIA



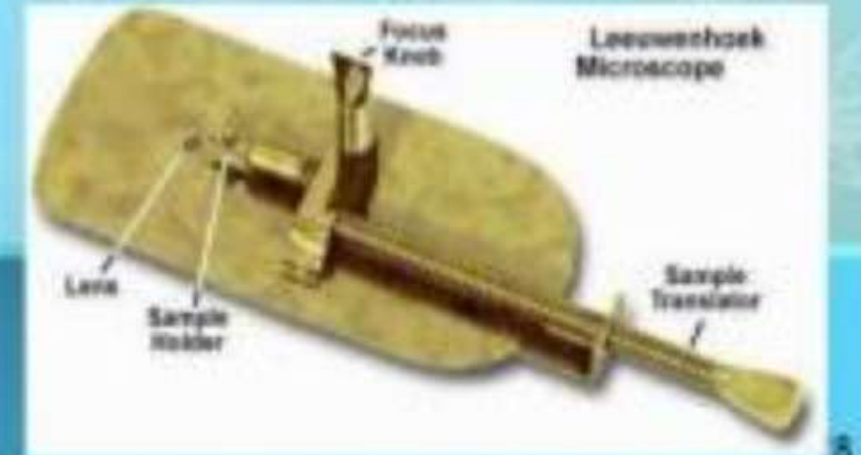


li living. cell



## Anton van Leeuwenhoek

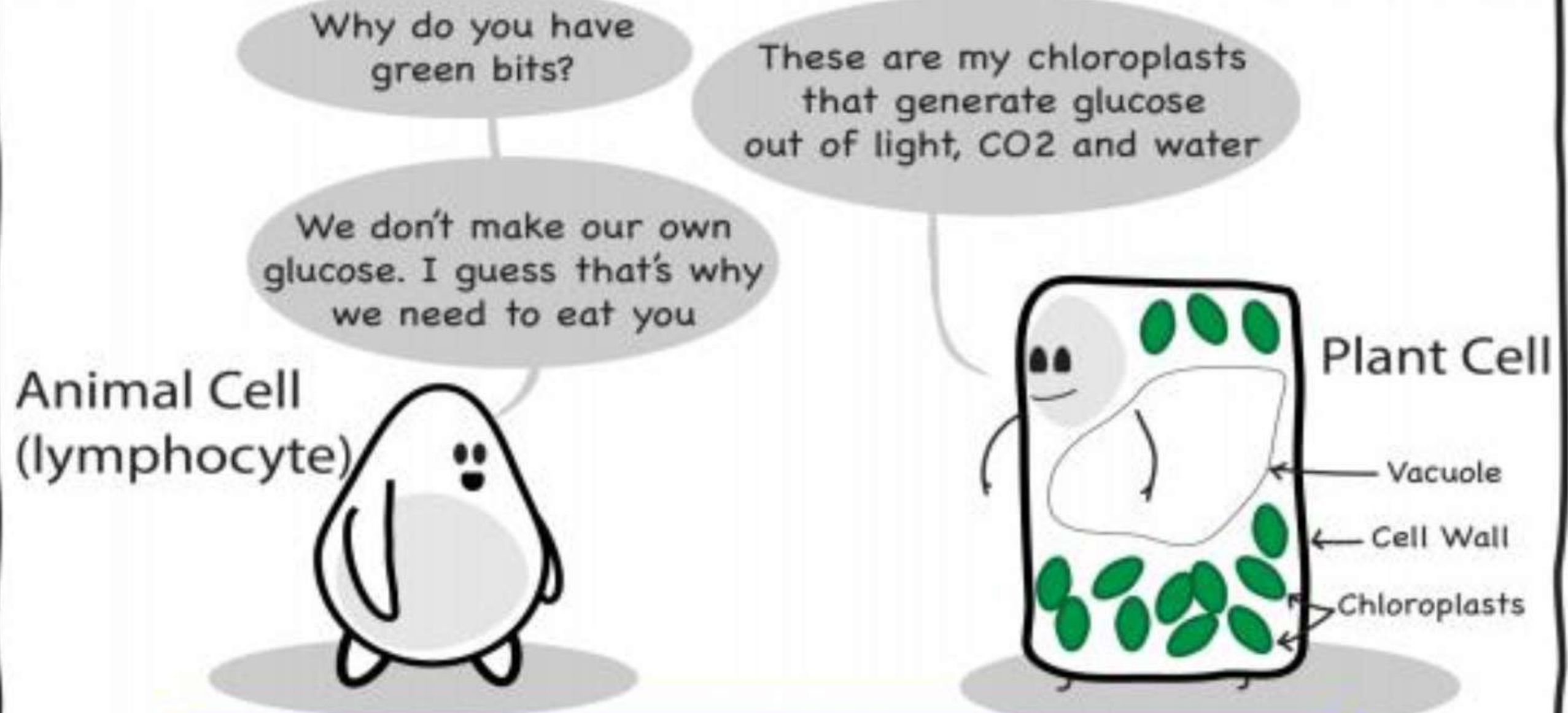
- In 1673, **Leeuwenhoek** (a Dutch microscope maker), was **first to view organism** (living things)
- Leeuwenhoek used a simple, handheld microscope to view **pond water & scrapings from his**



નાના જીવો



## Cell Types and Structure



Cell Types and Structure



## Type of cell

① Plant cell ] पादप कोशिका ]

② Animal cell ] जन्तु कोशिका ]

